

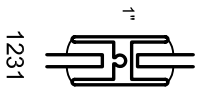


Aluminum Windows

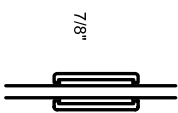
Mon-Ray, Inc.
Phone: (800) 544-3646
Fax: (763) 546-8977
www.monray.com

TRUE MUNTINS

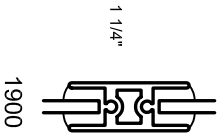
ADHESIVE APPLIED MUNTINS



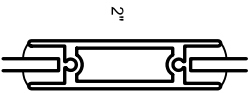
1231



1365

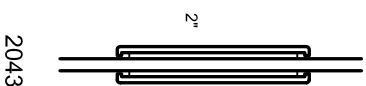


1900



2291

NOTE:
ALL MUNTINS CAN RUN
VERTICAL, HORIZONTAL
OR A COMBINATION OF BOTH



2043

FULL SCALE (11 x 17)

HALF SCALE (8-1/2 x 11)

DeVAC 400 SERIES
MUNTINS

ACCESSORIES
DETAILS

TRUE MUNTINS 1231, 1900, 2291
ADHESIVE APPLIED MUNTINS 1365, 2043

DRAWING
DV-400-070