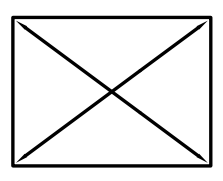


## DUAL GLAZED, EXISTING WOOD OPENING

### CAULKING NOTE:

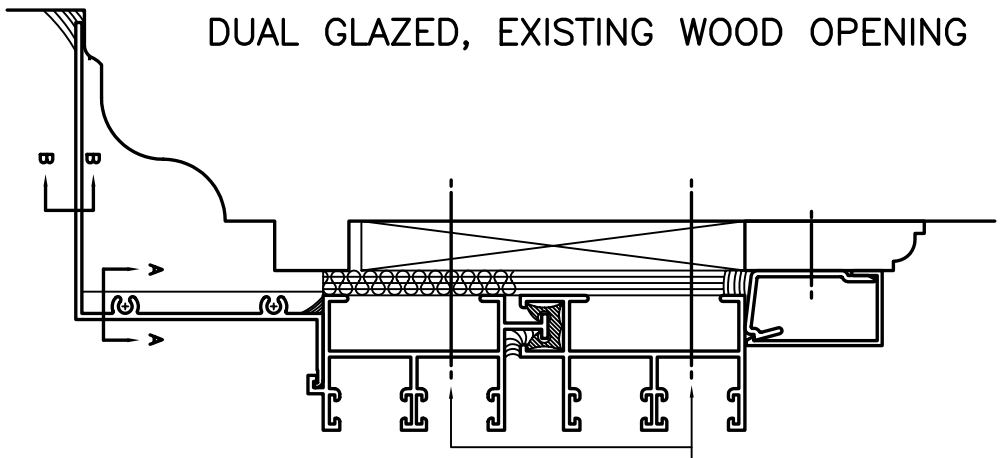
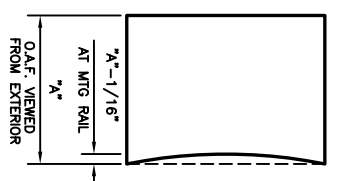
ALL CAULKING OR SEALANT USED FOR ASSEMBLY OF WINDOW UNITS (AS SHOWN OR NOTED) TO BE FACTORY APPROVED CAULKING OR SEALANT



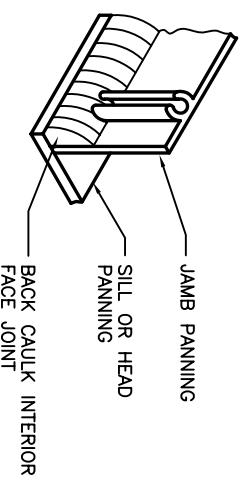
\* WINDOWS ARE TO BE SQUARED BY USING DIAGONAL MEASUREMENTS WITH A TOLERANCE OF ± 1/16"

### ERECTOR NOTE:

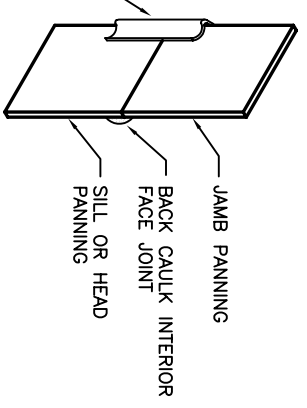
- GLASS AND SCREEN INSERTS MUST BE REMOVED FROM FRAME PRIOR TO INSTALLATION OF WINDOW FRAME AND RE-INSTALLED AFTER WINDOW FRAME HAS BEEN INSTALLED
- FRAMES MUST BE INSTALLED SQUARE WITH ALL MEMBERS STRAIGHT FOR 630, 640, AND 650 SERIES.
- FRAMES MUST BE INSTALLED SQUARE WITH ALL MEMBERS STRAIGHT EXCEPT FOR RIGHT STILE THAT IS TO BE BOWED INWARD AT MEETING RAILS FOR 660 SERIES ONLY.
- DEVAC WINDOW GUARANTEE BECOMES VOID IF UNITS ARE NOT INSTALLED PER INSTRUCTIONS AS SHOWN OR NOTED



#10 x 1 3/4" PHIL. FLAT HEAD S.S. S.M.S. NO. 6171 FOR SERIES 630, 640, AND 650 SERIES  
OR  
#10 x 2 1/2" PHIL. FLAT HEAD S.S. S.M.S. NO. 6172 FOR 660 SERIES ONLY

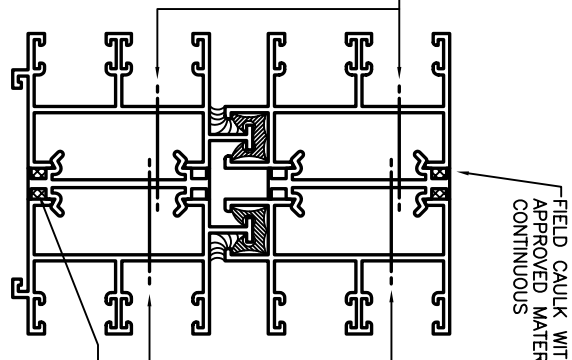


SECTION "A - A"



SECTION "B - B"

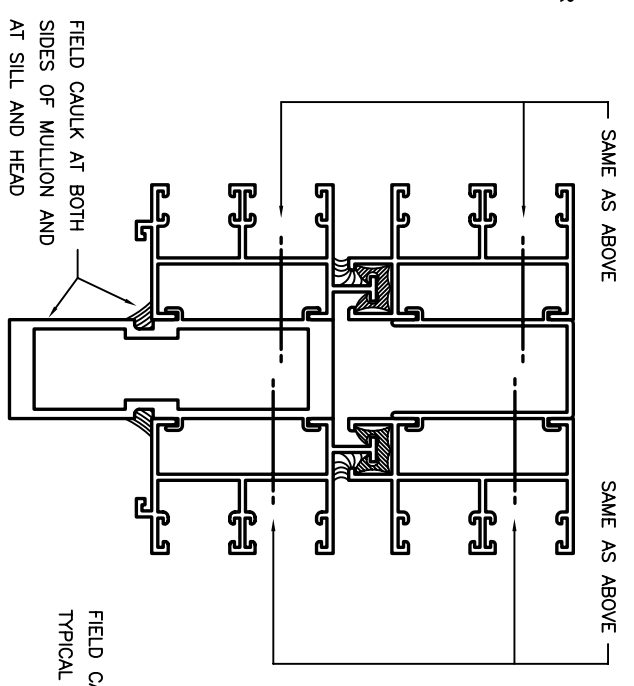
#10 x 1 1/4" PHIL. FLAT HEAD S.S. S.M.S. NO. 6169 FOR SERIES 630, 640, 650 AND 660 JAMBS WITH MULLIONS  
OR  
#10 x 1 3/4" PHIL. FLAT HEAD S.S. S.M.S. NO. 6171 FOR SERIES 630, 640, 650, AND 660 JAMBS WITHOUT MULLIONS



MULLIONS

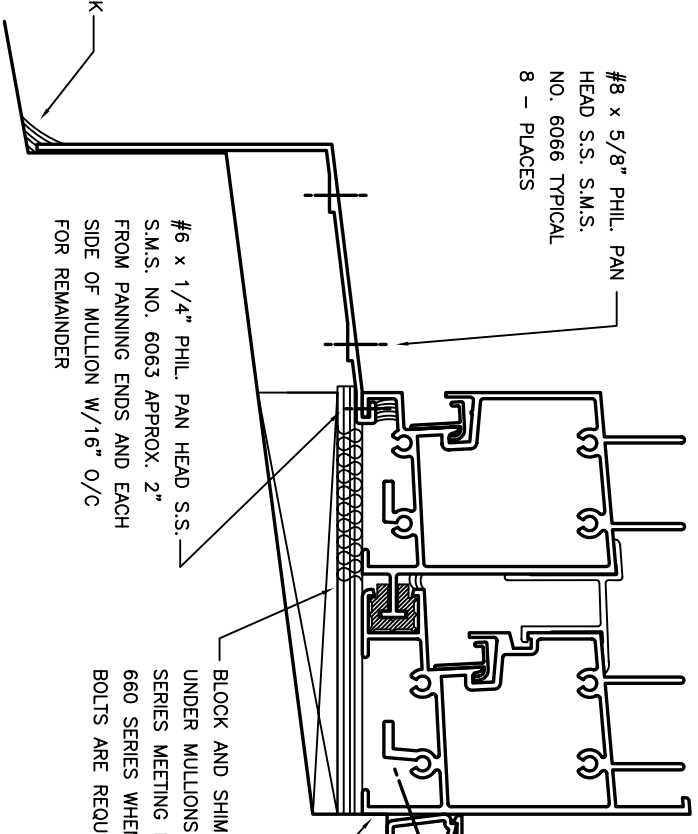
#10 x 1 1/4" PHIL. FLAT HEAD S.S. S.M.S. NO. 6169 FOR SERIES 630, 640, AND 650 JAMBS WITH MULLIONS  
OR  
#10 x 1 1/2" PHIL. FLAT HEAD S.S. S.M.S. NO. 6170 FOR SERIES 660 JAMBS WITH MULLIONS

SILL



SAME AS ABOVE

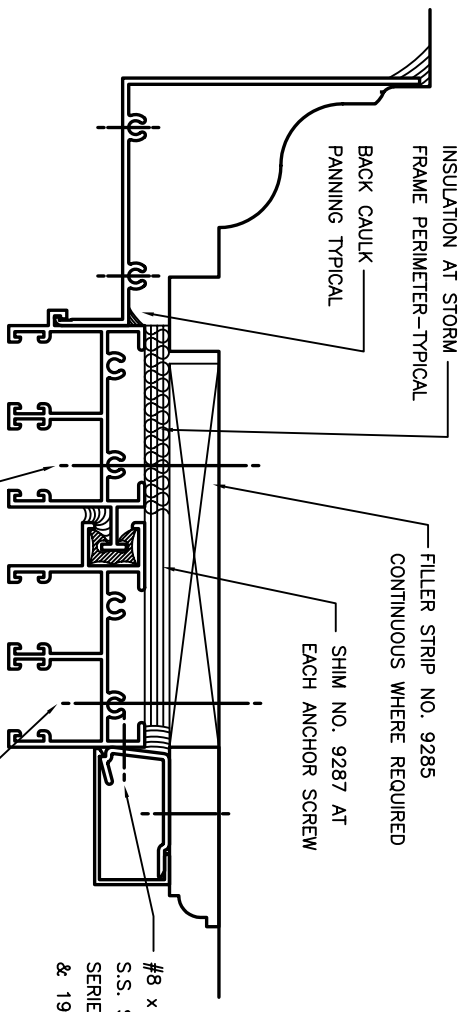
SAME AS ABOVE



#8 x 5/8" PHIL. PAN HEAD S.S. NO. 6066 TYPICAL 8 - PLACES

#6 x 1/4" PHIL. PAN HEAD S.S. S.M.S. NO. 6063 APPROX. 2" FROM PANNING ENDS AND EACH SIDE OF MULLION W/16" O/C FOR REMAINDER

HEAD



INSULATION AT STORM - TYPICAL  
FRAME PERIMETER - TYPICAL  
BACK CAULK - TYPICAL

FILLER STRIP NO. 9285 CONTINUOUS WHERE REQUIRED  
SHIM NO. 9287 AT EACH ANCHOR SCREW

#8 x 5/8" PHIL. PAN HEAD S.S. S.M.S. NO. 6066 FOR 660 SERIES ONLY WHEN THE NO. 1974 & 1975 BALANCE HEADER IS USED

#10 x 1 3/4" PHIL. PAN HEAD S.S. S.M.S. NO. 6171 TYPICAL FOR ALL 600 SERIES

#8 x 5/8" PHIL. PAN HEAD S.S. S.M.S. NO. 6066 (SEAL SCREW THREADS WHEN FASTENING INTO HOLLOW)  
TRIM AND CLIPS VARIABLE CLIPS SPACED 10" TO 14" ±  
#8 x 1" PHIL. PAN HEAD S.S. S.M.S. NO. 6046 - TYPICAL ALL CLIPS  
FIELD CAULK  
BLOCK AND SHIM AS REQUIRED UNDER MULLIONS AND UNDER 650 SERIES MEETING RAILS AND UNDER 660 SERIES WHENEVER WASHER BOLTS ARE REQUIRED

### INSTALLATION INSTRUCTIONS FOR DUAL GLAZED DEVAC 600 SERIES REPLACEMENT WINDOWS